

## Troubleshooting

### **My LitePower Lithium battery will not complete a full round of golf**

It is important to charge your LitePower Lithium battery fully before using it. The specially designed LitePower charger will show a green light when charging is complete. If the problem persists, please contact LitePower for further advice.

### **My LitePower Lithium battery loses power mid-round**

All LitePower Lithium Batteries contain a Battery Management System (BMS) to protect the battery and extend its lifetime. The BMS system can be triggered by excessive loads, overly steep hills or low voltages in the battery – normally caused by attempting to play considerably more holes than the battery is designed to achieve. The battery should restart when normal conditions are resumed or may need to be disconnected and reconnected in extreme cases. If this happens on a regular basis, please contact LitePower for further advice.

### **My LitePower Lithium charger is stopping and starting**

The LitePower Lithium charger is designed to synchronise with your battery to ensure efficient charging and this can cause the charger lights/fan to work intermittently at the beginning of the charging cycle. This is perfectly normal and should stop after a short period of time. If this continues for extended periods, please contact LitePower for further advice.

### **My LitePower Lithium battery will not charge**

The Battery Management System (BMS) in all LitePower Lithium batteries is designed to protect your battery from damage and will shut down the battery if charging levels fall below acceptable values. This can be caused by attempting to play significantly more holes than the battery is designed to achieve or alternatively leaving the battery uncharged for long periods of time after use (in excess of two weeks). If your battery will not charge, please contact LitePower for further advice.

### **How to safely dispose of your LitePower Lithium battery**

At LitePower we are dedicated to protecting the environment and strongly recommend disposing of your LitePower Lithium battery in a safe and environmentally friendly way. Our batteries can either be taken to a registered recycling point or alternatively returned to LitePower to allow us to recycle them.

LITEPOWER SPECIFICATIONS		
	18 Hole Battery	36 Hole Battery
Construction	LiFePO4 (Lithium ion Phosphate)	
Size	168mm x 128mm x 75mm (6.6in x 5.0in x 2.9in)	168mm x 128mm x 105mm (6.6in x 5.0in x 4.1in)
Weight	2.2kg (4.8lb)	3.2kg (7.0lb)
Capacity	15Ah or in excess of 18 holes	22Ah or in excess of 36 holes
Voltage	12v Nominal	
Life	5 x Longer than Lead Acid	
Warranty	24 months from date of purchase	
Charger	Dedicated hi-technology charger	
Charging Time	4.0 to 4.5 hours	4.5 to 5.0 hours
Management	Integrated cell management system	
Connection	"T" plug or Anderson/Torberry to suit all major trolley manufacturers	
Accessories	Quality fitted soft-touch bag	

# LITEPOWER™

## Now every golfer can enjoy a lightweight power source



## Battery and Charger

### User Instructions & Care Guide

Unit 3 Church Road Business Centre, Church Road,  
Sittingbourne, Kent, ME10 3RS

T: +44 (0) 1795 473315 info@litepower.co.uk

[www.litepower.co.uk](http://www.litepower.co.uk)

## Getting Started

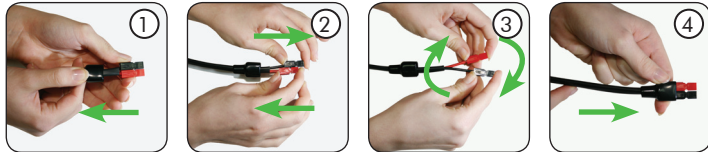
Thank you for choosing a LitePower Lithium battery. Please take a few moments to read through this important information to learn how to use your new battery safely and maximise its life.

The battery is shipped with a partial charge and will need to be fully charged before it is used for the first time using the specially designed LitePower Lithium charging pack. It is important not to use any other charging equipment with your LitePower Lithium battery.

The battery can be connected to your trolley using an Interconnect or Anderson/Torberry connection cable (sold separately). The cable required will vary depending on the connection method utilised by each trolley. If a different form of connection is required, please contact LitePower for further information.

If you are using an Anderson/Torberry cable, it is important to ensure that the red and black connections on the cable match those on the trolley. Failure to connect the cable correctly can severely damage the trolley electronics. If necessary, the plug can be easily altered to offer compatibility by following these simple steps:

1. Slide back the rubber covering from the red/black connections
2. Slide the red/black connections apart by pushing them in opposite directions
3. Once separated, swap the plug positions and slide them back together
4. Replace the plastic covering sleeve



## Important Charging Advice

Please take a couple of minutes to read the following important safety and maintenance advice. Failure to adhere to these recommendations could reduce the lifetime of your LitePower Lithium battery significantly.

- The battery must always be recharged after each use
- Please ensure both battery and charger cables are in a good condition
- The charging unit should only be used with 110/240v mains supplies
- The battery must be charged as soon as possible after use – it is advised to charge within 3 days
- The battery must be charged on a dry non-carpeted surface
- It must be charged in a well-ventilated area at temperatures ranging between 0°C and 35°C
- It is important that the charging fan is fully functional and uncovered
- Do not drop, throw, puncture or immerse the charger in liquid
- The LitePower charger must not be used to charge any other type of battery
- LitePower Lithium batteries must only be charged using the specially designed LitePower charging equipment
- Both battery and charger must only be opened and maintained by authorised personnel – failure to adhere to this advice will void your warranty
- The battery should be disconnected from the charger as soon as possible after charging

## How to care for your LitePower Lithium battery

- The battery should only be used in temperatures between -10°C and 45°C
- Long term storage above or below the recommended temperature range (for example in a car boot in winter) should be avoided
- The battery should only be cleaned using a damp cloth - do not use abrasive or solvent based cleaners
- Do not drop, throw, puncture or immerse the battery in liquid

## Charging Procedure

Due to the unique design of the LitePower charging unit, the battery bag does not need to be removed before charging. Please ensure you have read the important charging advice before attempting to charge your battery for the first time.

1. Connect the LitePower charger to the battery using the charging socket on the side of the battery
2. Plug the charger into a mains supply
3. Press the power switch on the back of the charger
4. The charger will begin its charging cycle

LED 1	●	RED - Charger powered
LED 2	●	RED/AMBER - Battery charging
LED 2	●	GREEN - Battery fully charged

5. Once charging is complete, it is recommended to disconnect the charger from both mains and battery

PLEASE NOTE: A full charging cycle can take between 4 and 5 hours but can vary depending on the level of discharge, battery condition, battery age and capacity. A new battery could take over six hours to charge fully.